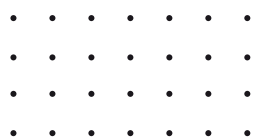




Ventilation unit with heat recovery



Contents page



01.

AirSaver

06.

How it works

02.

Main features

07.

Control

03.

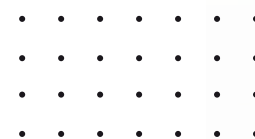
Additional features

04.

Technical data

05.

Device dimensions



01. AirSaver

> Air Saver is a compact ventilation unit with heat recovery mounted in the wall of the building. The unit is equipped with a ceramic exchanger, fan and filters. The accumulative exchanger retains thermal energy from the exhaust air extracted to then heat the supply air supplied to the room. This ensures that the air streams do not mix. The advantage of the system is the ability to synchronize several devices controlled wirelessly (remote control, smartphone app). Air Saver devices are ideal for use in Single-family residential buildings as well as multi-family, when in the building you own there is no space to install recuperation centralized or when we rent room in the building, and you want to take care of clean and healthy air, and at the same time reduce expenses on heating.



02. Main features



Filter G4

Purifies the air and prevents contamination of the exchanger



EC ventilator

Energy efficient EC motor



Ventilation duct

Telescopic ventilation duct



External air intake

Preventive water ingress inside the building



Magnetic panel

Decorative interior magnetic panel with easy function assembly and disassembly



Humidity sensor

Enabling automatic fan operation



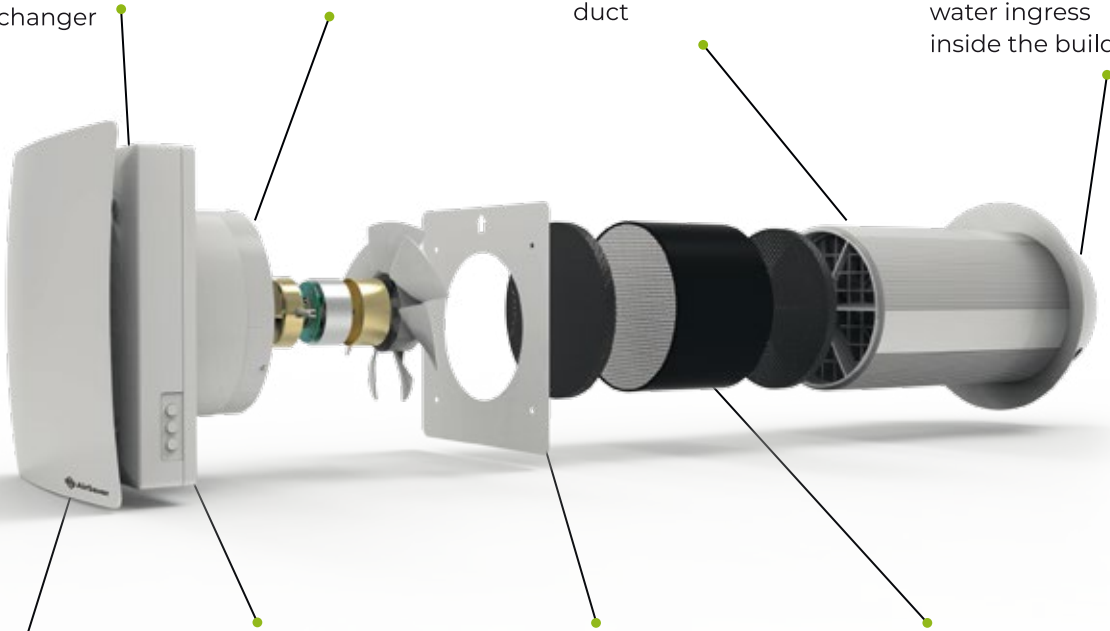
Mounting frame

Facilitates installation of the device



Ceramic heat exchanger

Providing heat recovery up to 90%



03. Additional features



Power plug

Makes it easy to connect the device yourself



Application

Control via smartphone App



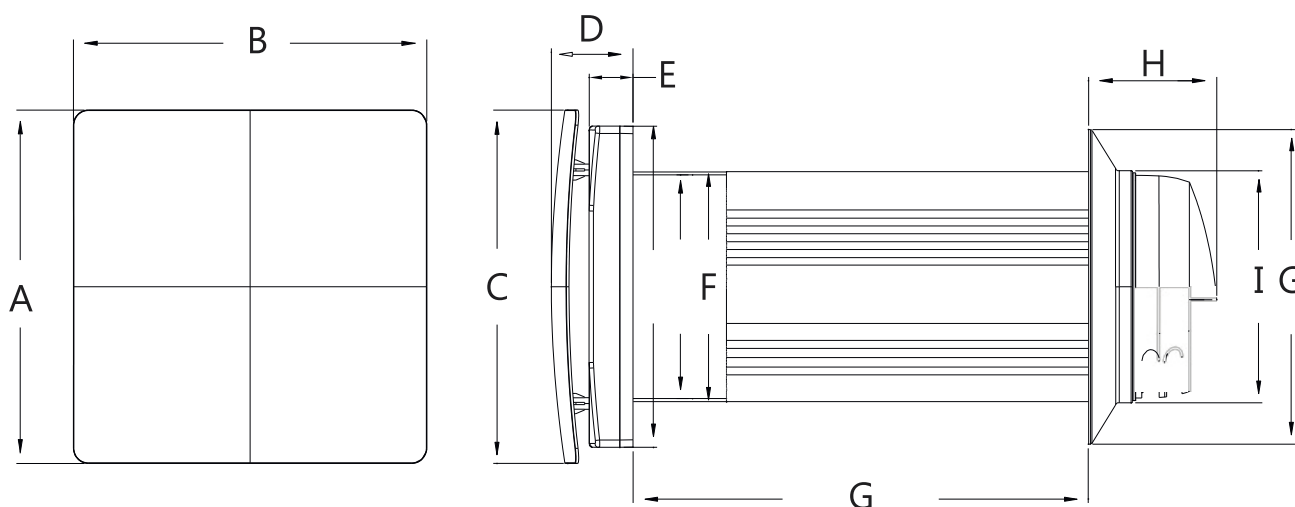
Pilot

Control by remote control

04. Technical data

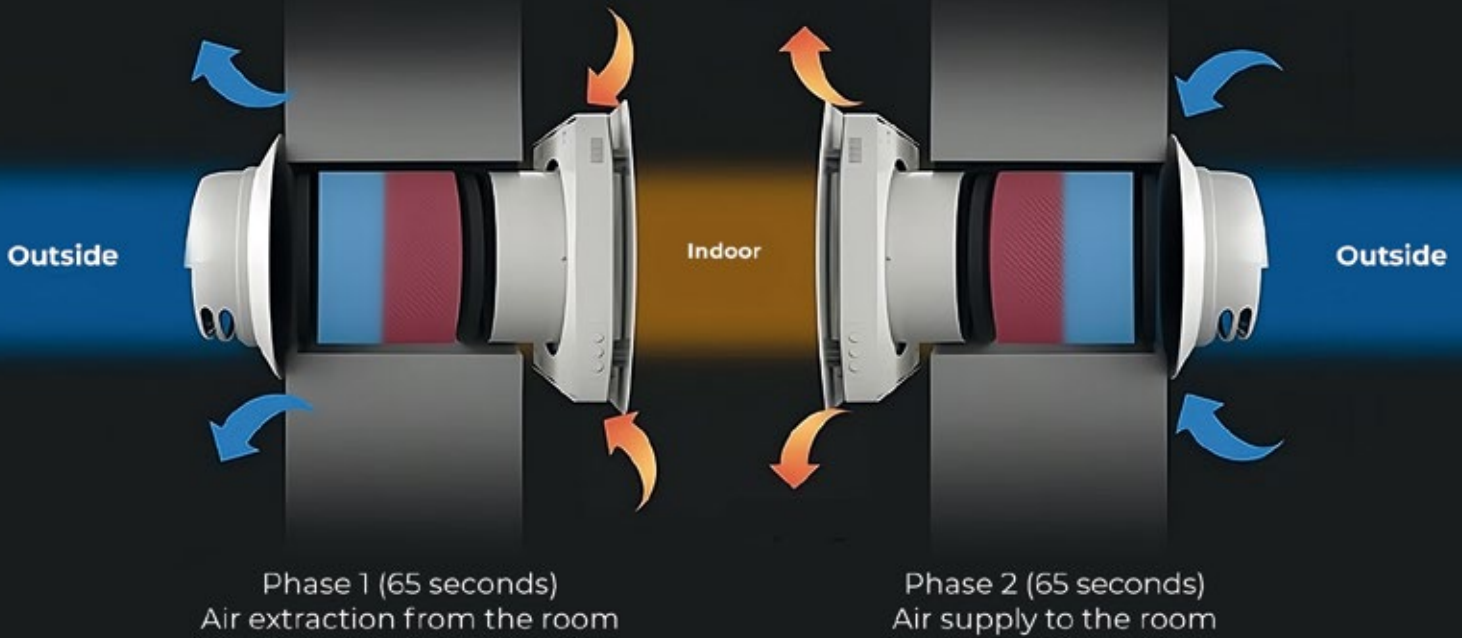
Specification											
Model	Diameter	Operation mode	Voltage	Fan power	Fan speed	Efficiency	Noise level	Exchanger efficiency	Energy class	Operating temperature	Weight
VT 501-MS	160 mm	Night	100 ~ 240V 50/60Hz	1,6 W	800 (obr/min)	20 m3/h	13 dB	up to 90%	A	from -20°C up to +50°C	5,5 kg
		I		1,8 W	1000 (obr/min)	48 m3/h	22 dB				
		II		3,9 W	1600 (obr/min)	54 m3/h	25 dB				
		III		7 W	2200 (obr/min)	60 m3/h	33 dB				
VT 125-MS	125 mm	Night	100 ~ 240V 50/60Hz	5,5 W	995 (obr/min)	20 m3/h	13 dB	up to 90%	A	from -20°C up to +50°C	4,5 kg
		I		5,8 W	1475 (obr/min)	30 m3/h	19 dB				
		II		7,3 W	2085 (obr/min)	45 m3/h	25 dB				
		III		9,5 W	2535 (obr/min)	60 m3/h	33 dB				

05. Device dimensions

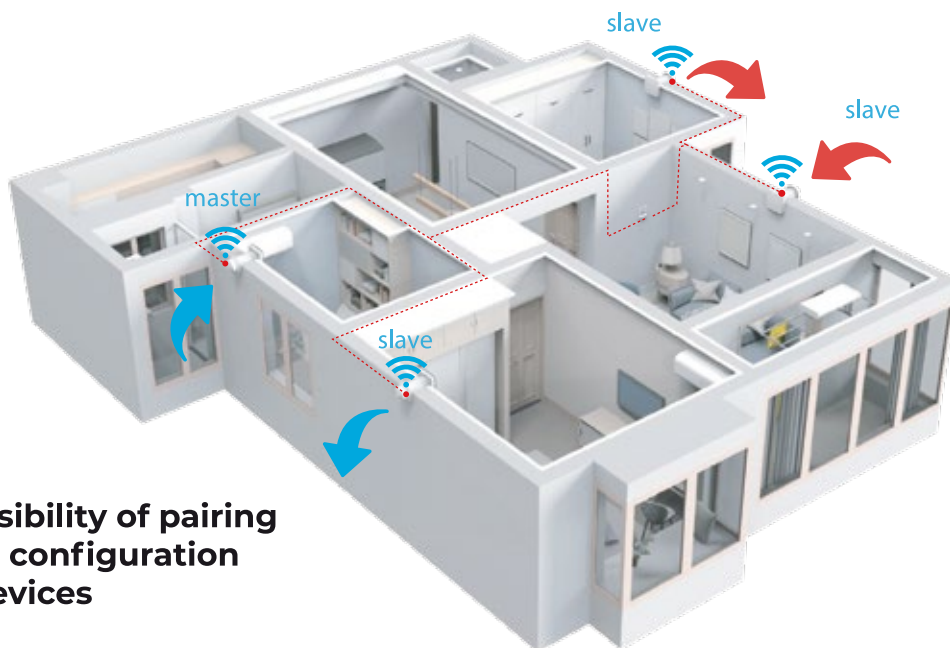


Model	A	B	C	D	E	F	G	H	I	G
VT125-MS	245	245	245	63,3	43,5	125	320-500	86	119	183
VT501-MS	242	242	242	56	30,1	157,6	250-500	87,87	159	215,5

06. How it works



Multi-device principles



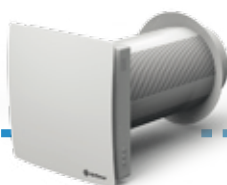
> Possibility of pairing and configuration 8 devices



Master
parent unit



Slave
slave unit



Slave
slave unit



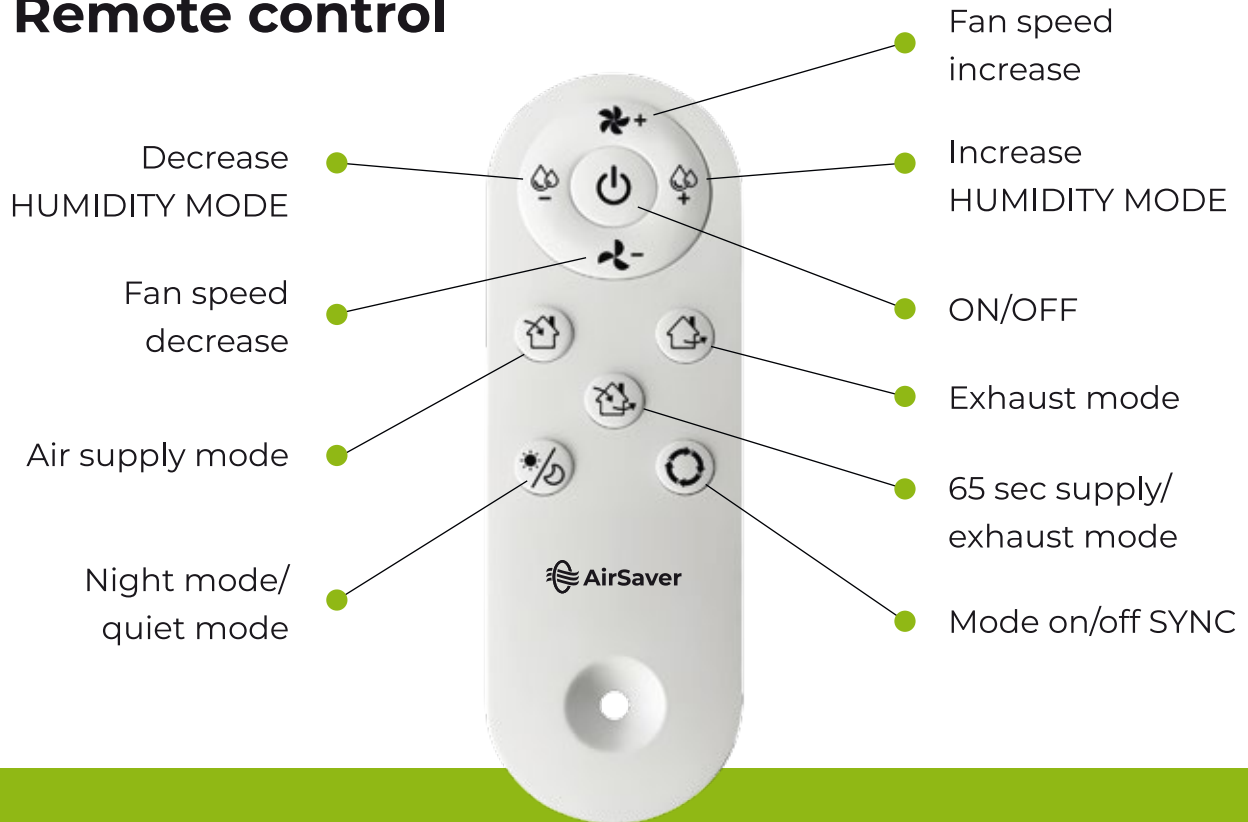
Slave
slave unit



Smartphone
app

07. Control

> Remote control



> App control





Recuperation systems
Ventilation systems
Chimney systems

PRODMAX Sp. z o.o.
ul. Sokołowska 38
05-806 Sokołów
NIP: 5342658107
REGON: 523805523

Customer service office

Krzysztof Szymański
Export Director
tel.: +48 502 308 944
email: krzysztof.szymanski@prodmax.pl